

November 1, 2018

Contact: Sara Bogosian, President and Executive Director
Whistler House Museum of Art
978-452-7641 | sbogosian@whistlerhouse.org
243 Worthen Street, Lowell, MA 01852
www.whistlerhouse.org

FOR IMMEDIATE RELEASE

FALL JURIED MEMBERS EXHIBITION 2018

Exhibition: November 17, 2018 - January 26, 2019

Reception: Saturday, November 17 from 2 to 4 pm

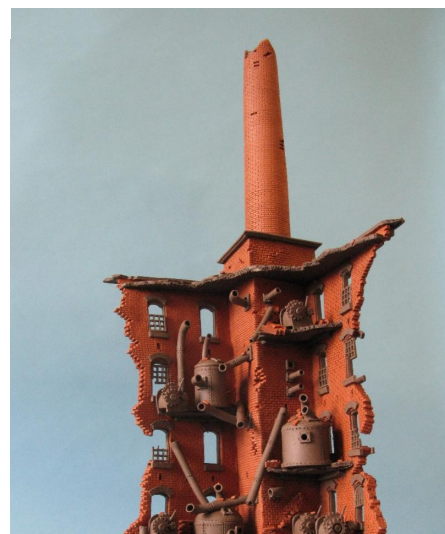
The Whistler House Museum of Art Announces New Exhibition: *Fall Juried Members Exhibition 2018*



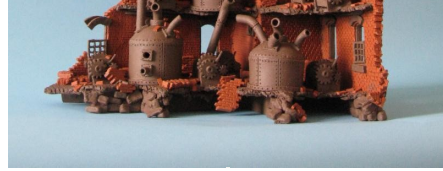
The Entomologist, Todd M. Casey, 6 x 9 in, Oil on Panel.

The Whistler House Museum of Art is pleased to announce its upcoming exhibition, the ***Fall Juried Members Exhibition 2018***. The show will run from **November 17, 2017 to January 27, 2018**. An opening reception will be held on **Saturday, November 17, from 2 to 4 pm in the Parker Gallery.**

The Lowell Art Association, Inc. (LAA) is the oldest incorporated art association in the country. In this year's Fall Juried Members Exhibition, see works from the artist members of the LAA in a range of subjects and mediums. The works of art featured in the exhibition represent both modernist and



traditional methods and aesthetics. Through paintings, drawings, sculpture, fiber art, printmaking, and photography, experience the world through varying perspectives in this exciting new show.



Mill Ruin, John Brickels

Carol G. J. Scollans, a Senior Lecturer in Art History for UMass Boston for 20 years is the juror for this exhibition. An independent curator and scholar, her specialty is the development of exhibits on American art, artists, and culture for institutions and organizations both here and abroad. She has written extensively on 19th and 20th century painting, sculpture and photography. Her most recent book *The Allure of Venice; Paintings by Walter Franklin Lansil*, accompanied the Whistler House Museum's spring 2018 exhibition of the same name.



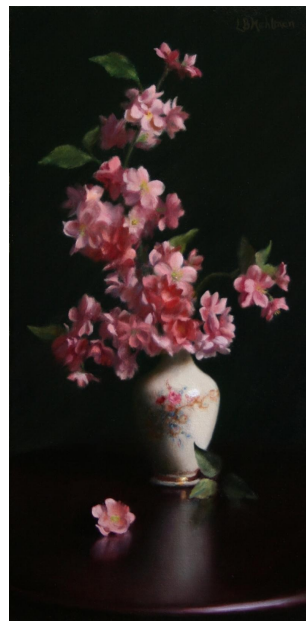
Putnam Building Sunset, Paul Richardson



It Is the Best Way, Gay Tracy

Ms. Scollans selected over 90 works from more than 230 submissions by over 85 artist members of the Lowell Art Association. The works were judged on such criteria as technique, composition, perspective, color, and originality.

"Every year we are getting more impressive fine works of art from the ever-growing talented artist membership of the Lowell Art Association, Inc.," says President and Executive Director Sara Bogosian. "Everyone should come and experience the wide variety of works that are a part of this new and exciting show."



Ephemeral Beauty, Lynne B. Mehlman

The Whistler House Museum of Art, located in Lowell, Massachusetts, is the historic birthplace of the famous American artist, James McNeill Whistler. Established in 1878 as the Lowell Art Association Inc., it is the oldest incorporated art association in the United States. The WHMA is known internationally for its distinguished collection of 19th and early 20th century New England representational art, including works by Whistler, Gorky, and Sargent. The historic home hosts many exhibits, lectures, concerts, educational and community programs, and an array of social events in the residence, Parker Gallery, and adjoining Victorian park. Hours are Wednesday through Saturday from 11 am - 4 pm.



Our Business Partners:

Battles Foundation
Donahue Enterprises
Enterprise Bank
Lowell Five
Mark & Elisia Saab Family Fund

Michael J. Conway Insurance
O'Connor Studios
Sage Bank
The Lowell Sun
University of Massachusetts Lowell

Connect with us!



Whistler House Museum of Art | 243 Worthen Street, Lowell, MA 01852

[Unsubscribe {recipient's email}](#)

[Update Profile](#) | [Constant Contact Data Notice](#)

Sent by sbogosian@whistlerhouse.org powered by



Try email marketing for free today!