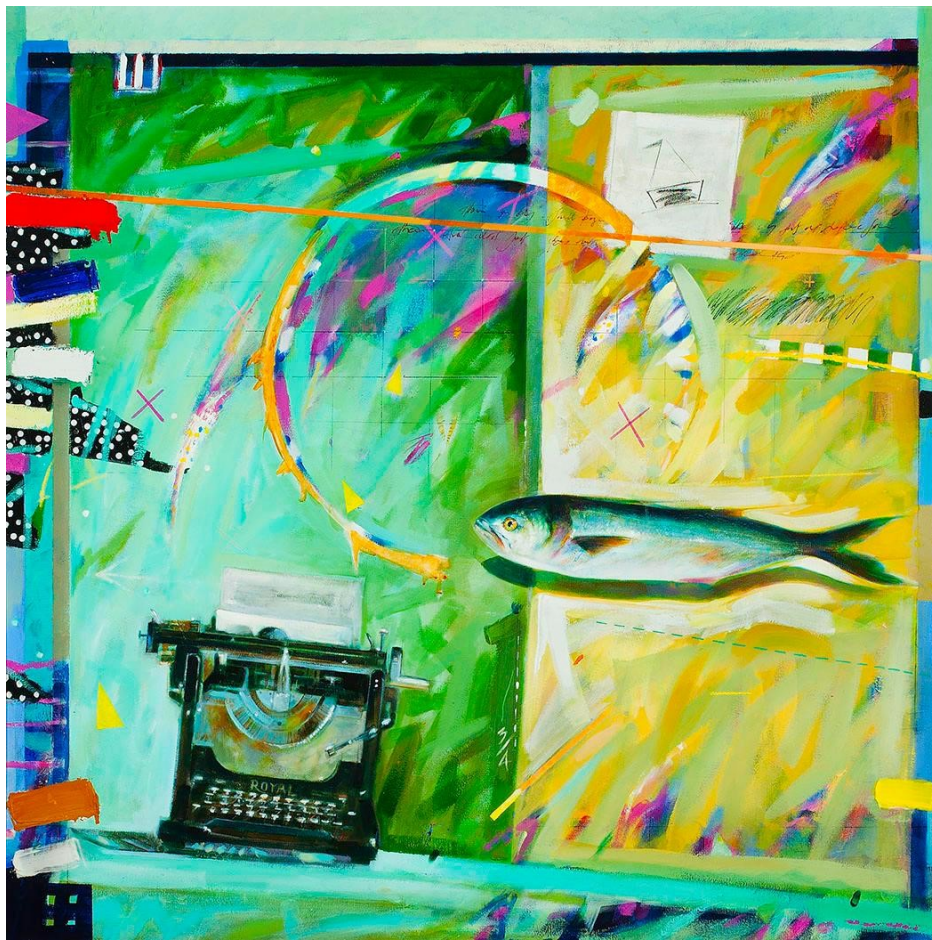


FOR IMMEDIATE RELEASE

FALL/WINTER JURIED MEMBERS EXHIBITION 2019

Exhibition: November 16, 2019 - January 25, 2020
Reception: Saturday, November 16 from 2 to 4 pm

The Whistler House Museum of Art Announces
New Exhibition:
Fall/Winter Juried Members Exhibition 2019



Patrick McCay, *Something Fishy*, Acrylic, 48 x 48 in.

The Whistler House Museum of Art is pleased to announce its upcoming exhibition, the *Fall/Winter Juried Members Exhibition 2019*. The show will



run from **November 16, 2019 to January 25, 2020**. An opening reception will be held on **Saturday, November 16, from 2 to 4 pm** in the **Parker Gallery**.



Overlooking the Park, Rockport, Teri Gambardella



Kimonos in Kyoto, Cheryl Kessler

The Lowell Art Association, Inc. (LAA) is the oldest incorporated art association in the country. In this year's Fall/Winter Juried Members Exhibition, see works from the artist members of the LAA in a range of subjects and mediums. The works of art featured in the exhibition represent both modernist and traditional methods and aesthetics. Through paintings, drawings, sculpture, fiber art, printmaking, and photography, experience the world through varying perspectives in this exciting new show.

Kim S. Theriault, noted academic, critic, and mentor in Art History and Museum Studies is the juror for this exhibition. Theriault received her PhD from The University of Virginia. Her publications in the field of Modern and Contemporary art include books, exhibition essays, journal articles, and art reviews. The recipient of numerous awards, including a Society for the Preservation of American Modernists grant and selection into the National Endowment for the Humanities Institute program. Specializing in identity, memory, and trauma in contemporary art, she has also presented nationally and internationally on such subjects as the artist Arshile Gorky and the Vietnam Veterans Memorial. While heading the art history program at Dominican University and teaching graduate students at the School of the Art Institute of Chicago, she has become an advisor to contemporary artists through individualized critiques, assisting with the development of their artist statements, and identifying exhibition strategies.



Storm Surge, Riley, Law Hamilton

Ms. Theriault selected over 90 works from more than 250 submissions by over 100 artist

members of the Lowell Art Association. The works were judged on such criteria as technique, composition, perspective, color, and originality.

"Each year the Lowell Art Association membership grows and the body of work becomes more and more impressive," says President and Executive Director Sara Bogosian. "This is a truly remarkable and diverse exhibition, and everyone should come to experience it."



The Ledges, 1925, Martha Wolfe



Red Brownstone, John Brickels

The Whistler House Museum of Art, located in Lowell, Massachusetts, is the historic birthplace of the famous American artist, James McNeill Whistler. Established in 1878 as the Lowell Art Association Inc., it is the oldest incorporated art association in the United States. The WHMA is known internationally for its distinguished collection of 19th and early 20th century New England representational art, including works by Whistler, Gorky, and Sargent. The historic home hosts many exhibits, lectures, concerts, educational and community programs, and an array of social events in the residence, Parker Gallery, and adjoining Victorian park. Hours are Wednesday through Saturday from 11 am - 4 pm.



Our Business Partners:

- Battles Foundation
- Donahue Enterprises
- Enterprise Bank
- Mark & Elisia Saab Family Fund

- Michael J. Conway Insurance
- O'Connor Studios
- The Lowell Sun
- University of Massachusetts Lowell



Whistler House Museum of Art
243 Worthen Street
Lowell, MA 01852
Office: (978) 452-7641
www.whistlerhouse.org

Connect with Us!
