

FOR IMMEDIATE RELEASE

## IN THE LIGHT OF THE PAST: THE STUDENTS OF PAUL INGBRETSON

Exhibition: June 3 - August 26, 2023

Reception: Saturday, June 3rd from 1 - 3 pm

Lecture: Thursday, June 8th at 6:30 PM

*The Method is the School: Boston School  
Contrasted with the Academic*

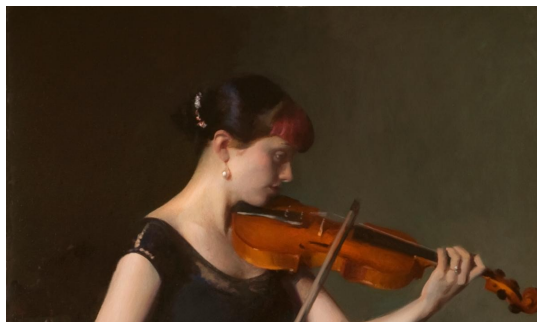
---

The Whistler House Museum of Art Announces  
New Exhibition:  
*In the Light of the Past: The Students of Paul Ingbretson*



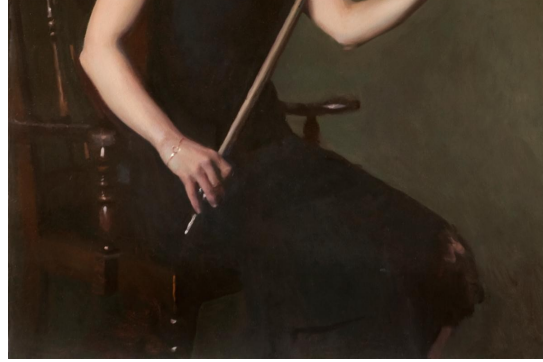
Lynne B. Mehlman, *Peacocks and Berries*, Oil on Linen, 14 x 11 in.

The Whistler House Museum of Art (WHMA) is pleased to announce its upcoming exhibition, *In the Light of the Past: The Students of Paul Ingbretson*. After postponing the exhibition due to the COVID-19 pandemic in early 2020, the museum is excited to showcase works of art by Paul Ingbretson and his talented



students. The show will run from **June 3, 2023 to August 26, 2023**. An opening reception will be held on **Saturday, June 3, from 1 to 3 p.m. in the Parker Gallery**.

Since 1982, **The Ingbretson Studio of Drawing and Painting** in Lawrence, MA, has educated artists in the Nineteenth-Century Boston School approach to painting. This stunning collection of work represents the broad range, style, and individuality which his students have developed — and are still developing — under his guidance and knowledge.



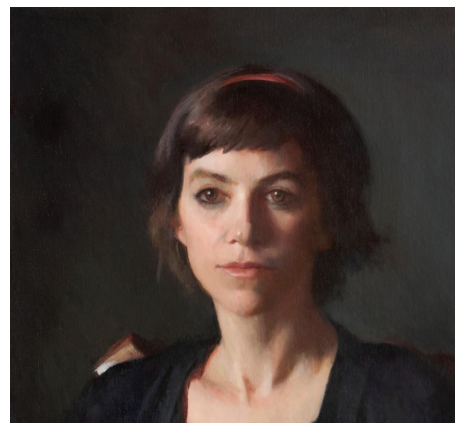
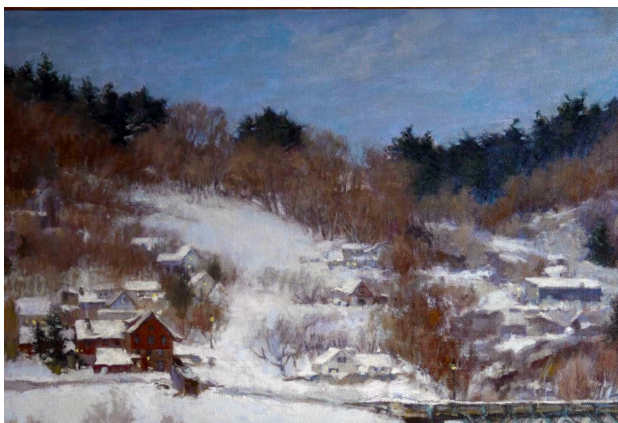
Paul Ingbretson, *The Bach Bouree in E Minor*, Oil, 50 x 40 in.



Deidre Riley, *Magnolia in Blue*, Oil on Linen, 20 x 16 in.

**Paul Ingbretson** is the juror for the exhibition. Ingbretson is a top tier professional artist, teacher, and a leading modern-day exponent of what became known as the "Boston School" of American art. His background includes several years at the Art Students League of New York alongside many of their top artists. Ingbretson ultimately organized his artistic approach around the values, work, analysis, and writings associated with the "Boston School," as interpreted by the late R. H. Ives Gammell. Paul is equally adept and talented in painting portraits, interiors, still lifes, and landscapes, and teaches privately in Lawrence, Massachusetts and Haverhill, New Hampshire. He was a long serving president of the prestigious Guild of Boston Artists, which was initially formed at the beginning of the 20th Century by the artists responsible for the evolution of the "Boston School."

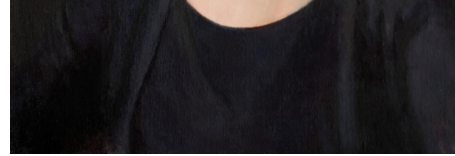
"As a teacher, it gives me great pleasure to be showcasing the work of my students from across the country. Teaching them in the traditional style of the Boston School of American Art has produced many fine artists throughout the years. The Whistler House Museum of Art has an outstanding collection of Boston School artists, and I am thrilled for the opportunity to be working in partnership with this fine institution," says Ingbretson.







Anita I. Johnson, *Snowbound*,  
Oil on Linen Canvas, 31 x 34 in.



Mary Minifie, *Deidre*, Oil, 16 x 20 in.

"Paul Ingbretson and the Ingbretson Studio has for a long time been one of the best art schools in all of New England," says President and Executive Director of the WHMA, Sara Bogosian. "We are so proud that we are presenting, for the first time in Lowell, a collaboration with artists who studied under his unique style. Everyone will marvel at the talent of the artists that have grown from this school."

In addition, on **Thursday, June 8th at 6:30 PM**, Ingbretson will be giving a lecture in the Parker Gallery to accompany this exhibition, entitled ***The Method is the School: Boston School Contrasted with the Academic***. All are welcome to attend.



Jean Lightman, *Qi*, Oil on Canvas, 20 x 30 in.

The Whistler House Museum of Art, located in Lowell, Massachusetts, is the historic birthplace of the famous American artist James McNeill Whistler. Established in 1878 as the Lowell Art Association Inc., it is the oldest incorporated art association in the United States. The WHMA is known internationally for its distinguished collection of 19th and early 20th century New England representational art, including works by Whistler, Gorky, and Sargent. The historic home hosts many exhibits, lectures, concerts, educational and community programs, and an array of social events in the residence, Parker Gallery, and adjoining Whistler Park. Hours are Wednesday through Friday, 11 am - 4 pm.



Whistler House  
Museum of Art

Connect with Us!



Whistler House Museum of Art  
243 Worthen Street  
Lowell, MA 01852  
Office: (978) 452-7641  
[www.whistlerhouse.org](http://www.whistlerhouse.org)

Whistler House Museum of Art | 243 Worthen Street, Lowell, MA 01852

[Unsubscribe sbogosian@whistlerhouse.org](#)

[Update Profile](#) | [Constant Contact Data Notice](#)

Sent by sbogosian@whistlerhouse.org powered by



Try email marketing for free today!