

FOR IMMEDIATE RELEASE



July 12, 2017

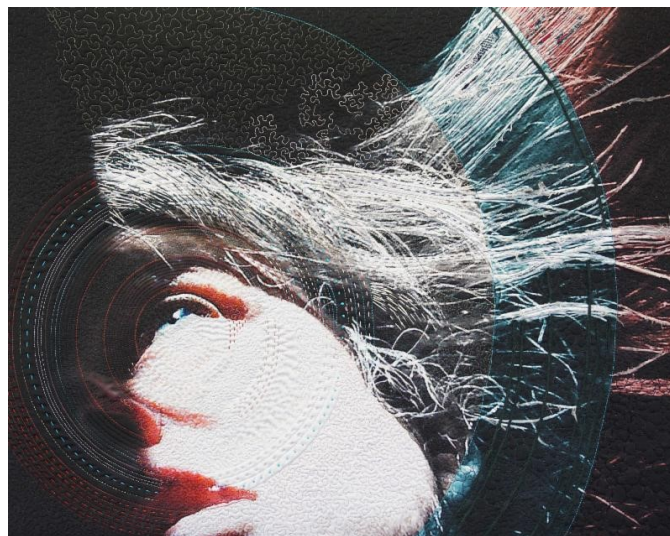
Contact: Sara Bogosian, President and Executive Director
Whistler House Museum of Art
978-452-7641 | sbogosian@whistlerhouse.org
243 Worthen Street, Lowell, MA 01852
www.whistlerhouse.org

Contemporary Art Quilts 2017

Exhibition: August 5 to September 1, 2017

Reception: Saturday, August 5 from 2 to 4 pm

**The Whistler House Museum of Art Announces New
Exhibition:
*Contemporary Art Quilts 2017***



Jill Kerttula, *Selfie*

The Whistler House Museum of Art is pleased to announce its upcoming exhibition, *Contemporary Art Quilts 2017*. The show, presented exclusively at the Whistler House, will run from August 5 to September 1, 2017. An opening reception will be held on Saturday, August 5 from 2 to 4 pm in the Parker Gallery.

Each summer, the Whistler House Museum of Art hosts a juried exhibition of quilts centered on a variety of themes. This year, the Whistler House Museum of Art welcomes contemporary quilts of all kinds, colors, and subject matter. The theme of this year's juried quilt exhibition has been left open to provide the opportunity for free expression and creativity, allowing all fiber artists to showcase their strongest work.



Marilyn Belford
The Wrath of Poseidon



Kirenada
Sterling Benjamin
*The Clouds of
Unknowing*



Denise Roberts
Sisu #2

Our jurors, Wen Redmond and Michele O'Neil Kincaid, chose 37 original quilts from over 120 submissions to create a show of quilts that vary greatly in color, theme, composition, and technique.

Wen Redmond is an award-winning fiber artist whose work embraces several mediums, including digital processes, surface design, and collage. Redmond is a sought after quilt instructor, who has been holding specialized classes throughout the country and internationally, including classes this summer in Japan. Her work and articles have been published in numerous books and magazines, including her new book, *Wen Redmond's Digital Fiber Art*. She will hold a book signing from 3:00 to 4:00 the day of the exhibition opening reception on August 5.

Michele O'Neil Kincaid is an artist with over 35 years of experience. She describes her work as "traditional quilting run amok." Kincaid's work has been published in *Fabric Trends* magazine. She has exhibited in shows across the country and also teaches quilting classes.

"We are delighted to be featuring this extraordinary collection of art quilts filled with works from some of the most prolific national and international art quilters," says President and Executive Director Sara Bogosian. "The Whistler House Museum of Art invites everyone to experience the beautifully intricate works of these truly talented artists."



Sarah Carpenter
Ode to Iceland

The Whistler House Museum of Art, located in Lowell, Massachusetts, is the historic